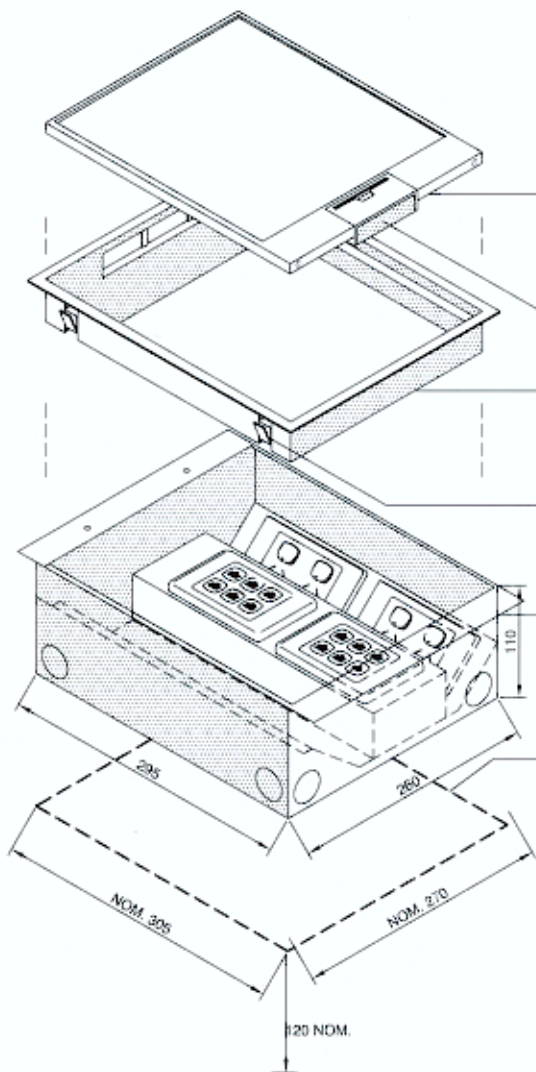


Features:



Moulded Polyamide lid with steel insert plate (8mm carpet rebate).

Cable flap with dust guards and recessed handle

Moulded frame assembly with protective side edges.
Frame size (310 x 265mm).

Fixing clamps securing lid/frame to box body

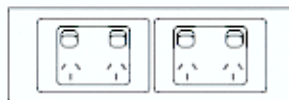
Steel box body

(295 x 260 x 110mm deep)

10 No. 25mm Dia. conduit knockouts

Box body can be cast directly into concrete or a preformed recess (305 x 270 x 120mm deep).

Recess Size: Nom. 305 x 270 x 120mm deep



LEFT/RIGHT POWER VIEW



CENTRE DATA VIEW