

FFOB-560 – Flush Floor Outlet Box General Guide to Installation

A.) Prepare area for installation

1..) Raised Floor

Cut an hole in floor at desired location and ensure there is 110mm depth clearance. The required hole is circular and is 245mm.

2..) Slab/Screed Installation

Secure canister housing (244x110mm) to structural slab or (recommended option) within preformed recess / blockout. Ensure canister is positioned to finish flush & level with final slab surface and is secured to prevent 'dipping' or 'floating' within screed.

Positioning and securing the canister accurately will prevent operation/installation problems at later stages. Connect conduits to the canister at desired locations – power on one side – data on the other. Cover opening in canister top, or insert foam fill, to prevent screed from entering the canister.

B.) Floor Box Lid & Frame Installation

Floor surface (carpet, vinyl etc...) is to be laid first and trimmed to size of circular opening in canister top.

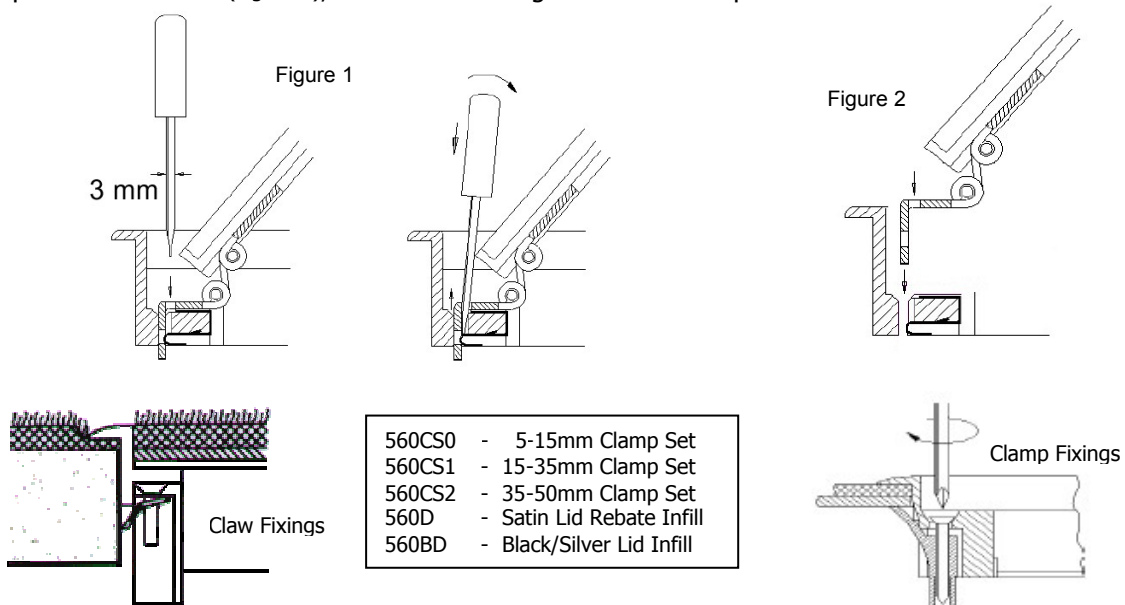
Remove lid of floor box assembly by unscrewing hinge (retain screws) then (Figure 1) - by placing flat blade screwdriver down hinge to unfasten from retaining clip. Floor contractor is then to cut and fit the floor finish into the lid rebate or the optional matching cast rebate infill is to be affixed.

Fit the FFOB-560 frame into the mounting space created in Step A..) by slackening cavity fixing claws - then easing the unit into place. Secure the frame by tightening claws until solid – do not overtighten. Special clamps are available for raised floors. Clamps to suit 5-15mm, 15-35mm and 35-50mm thickness' are available where the standard fixing claws are considered unsuitable.

Terminate outlets as required (as per AS3000) – fixing them to the mounting bracket supplied.

Ensure all components maintain earth continuity.

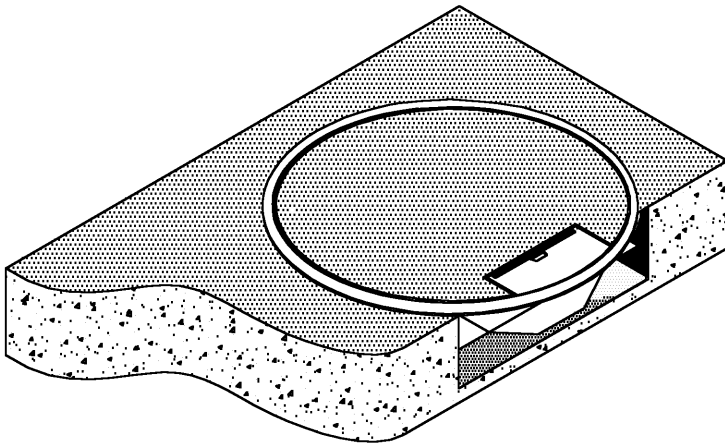
Replace floor box lid (Figure 2), screw fix the hinge and test the operation of the unit.



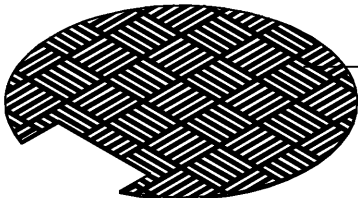
Tel: Aust 1300 30 22 49

Tel: NZ 03 379 9283 or 09 525 6051 for further information or assistance

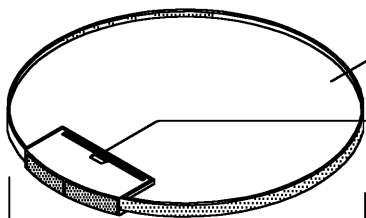
Assembly Diagram Cat No. FFOB-560



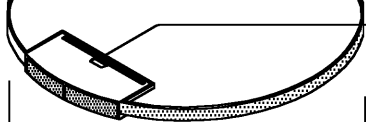
Features:



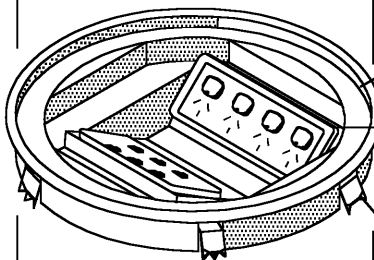
Optional cast alloy lid infill with slip resistant tread. Available in satin silver or a black / silver highlight finish.



Cast alloy lid assembly with 5mm carpet rebate. (Hinges to frame assembly).

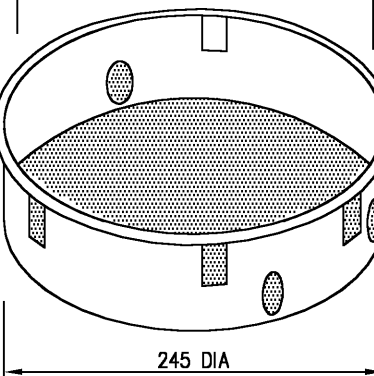


Cast alloy cable outlet flap with neoprene dust guards and integrated recessed metal handle.



Cast alloy frame assembly with 10mm carpet protective side flanges. (260mm Dia.)

Maximum outlet capacity
- 1 No. 4 Gang (quadruple) GPO
OR 1 No. standard size double GPO
- 1 No. standard size voice / data plate (Max. 6 gang)



Fixing clamps securing lid / frame to steel canister

Steel canister
(245mm Dia. x 110mm deep)
4 No. 25mm Dia. conduit knockouts
Box body can be cast directly into concrete or a preformed recess.

Recess Size: Nom. 265 Dia. x 120mm deep