

FFOB-590 – Flush Floor Outlet Box General Guide to Installation

A..) Prepare area for installation

1..) Raised Floor

Cut hole in floor at desired location and ensure there is 90mm depth clearance for outlets. The required hole is circular and is 307mm in diameter. Fixing clamps may be ordered / required to clamp floor box directly to floor tile.

2..) Slab/Screed Installation

(Careful installation of a cut-to-size foam blockout will allow unit to secure directly to cavity wall without a canister)

Secure spun canister to structural slab or (recommended option) within preformed recess/blockout. Ensure the canister is positioned to finish flush & level with final slab surface and is secured to prevent 'dipping' or 'floating' within screed. Use cut-to-size (308mm) foam block to fill canister to maintain its shape during screeding in.

Positioning and securing the canister accurately will prevent operation/installation problems at later stages. Connect conduits to spun canister at desired locations and cover the opening to prevent screed entering.

B..) Floor Box Lid & Frame Installation

Floor surface (carpet, vinyl etc...) is to be laid first and trimmed to size of circular opening in steel box body or to size of aperture in raised floor.

Remove lid of floor box assembly (Figure 2) - by placing flat blade screwdriver down hinge to unfasten from retaining clip after unscrewing hinge. Floor contractor is then to cut and fit the floor finish into the lid rebate or the optional matching cast rebate infill is to be affixed.

Fit the FFOB-590 frame into the mounting space created in Step A..) by slackening fixing claws - then easing the unit into place. Fixing Clamp Sets may be ordered to secure directly to raised floor panels. Secure the frame by tightening claws (Figure 1) until solid – **do not overtighten**.

Terminate outlets as required (as per AS3000) – fixing them to the mounting bracket and shroud power outlets for safety. Ensure all components maintain earth continuity. Replace floor box lid (Figure 3) and test the operation of the unit.

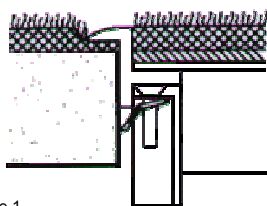


Figure 1

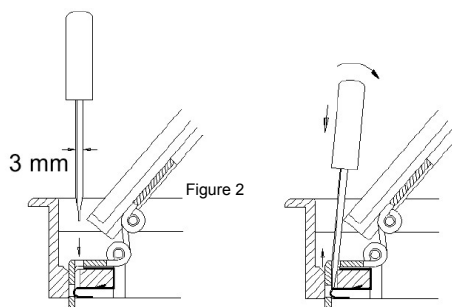


Figure 2

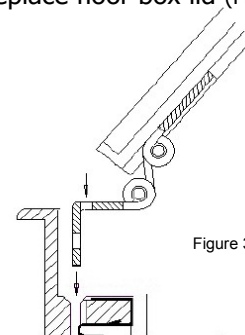
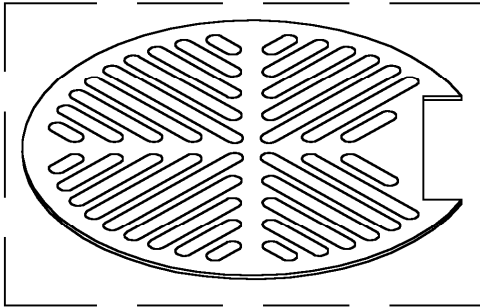


Figure 3

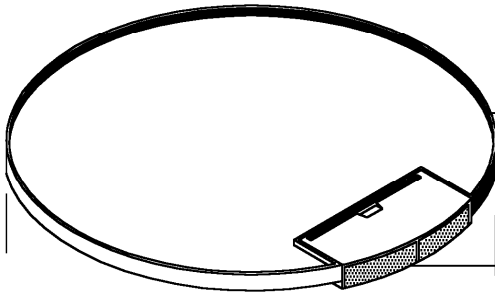
590CS0	-	5-15mm Clamp Set
590CS1	-	15-35mm Clamp Set
590CS2	-	35-50mm Clamp Set
590D	-	Satin Lid Rebate Infill

Assembly Diagram Cat No. FFOB-590

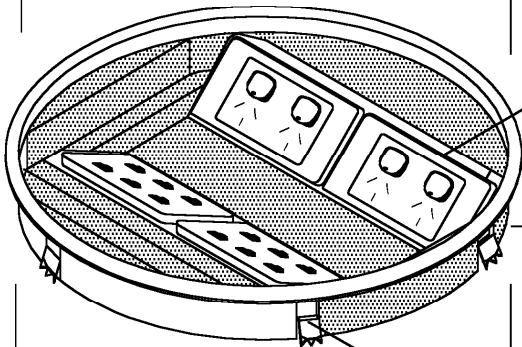
Features:



Optional cast alloy lid infill with slip resistant tread. Available in satin silver finish to match lid and frame set.



Cast alloy lid assembly with 5mm carpet rebate.
(Hinges to frame assembly).

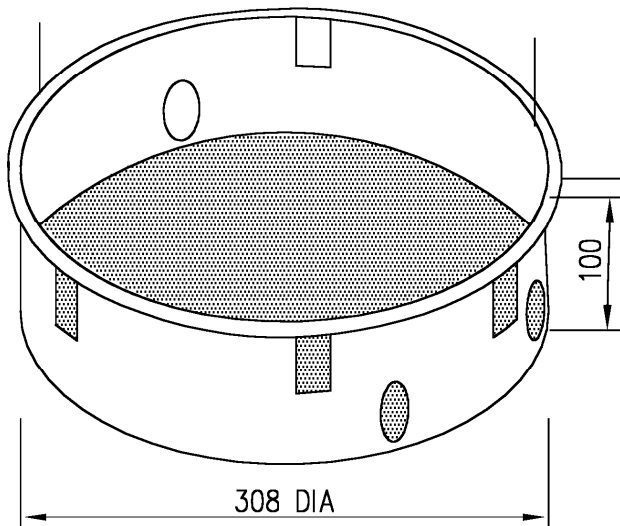


Cast alloy cable outlet flap with neoprene dust guards and integrated recessed metal handle.

Maximum outlet capacity
- 2 No. Standard size double GPO's
- 2 No. Standard size voice / data plates
(Max. 6 gang each)

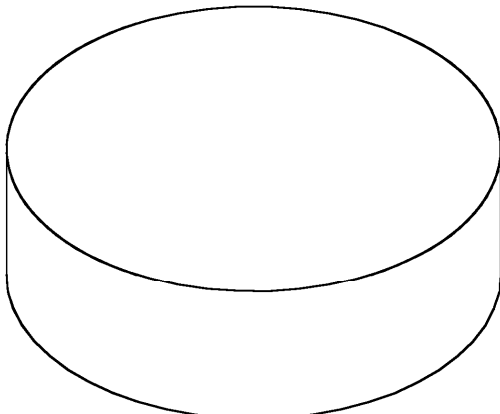
Cast alloy frame assembly with 10mm carpet protective side flanges.
(325mm Dia.)

Fixing clamps securing lid / frame to block out in concrete screed.



Aluminium canister
(308mm Dia. x 100mm deep)
4 No. 25mm Dia. conduit knockouts
Box body can be cast directly into concrete or a preformed recess.

Recess Size: Nom. 320 Dia. x 120mm deep



Foam canister fill.
Fit inside canister during screeding in process to maintain canister size & shape