

Model 595 – Floor Outlet Box General Guide to Installation

A.) Prepare area for installation

1..) Raised Floor

Cut aperture in floor at desired location and ensure there is 60mm depth clearance for outlets. The required aperture is circular and is 308-309mm in diameter.

2..) Slab/Screed Installation

Secure aluminium canister to structural slab or (recommended option) within preformed recess / blockout. Ensure the canister is positioned to finish flush & level with final slab surface and is secured to prevent 'dipping' or 'floating' within screed.

Connect conduits to canister body at desired locations and cover opening in canister to prevent screed entering box. Use cut-to-size foam block (308mm) to fill canister to maintain shape during screeding in process.

Positioning and securing the canister accurately will prevent operation/installation problems at later stages.

B..) Floor Box Lid & Frame Installation

Floor surface (carpet, vinyl etc...) is to be laid first and trimmed to size of circular opening in aluminium canister or to size of aperture in raised floor.

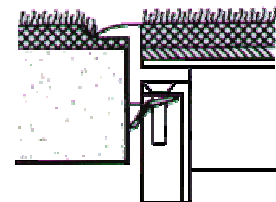
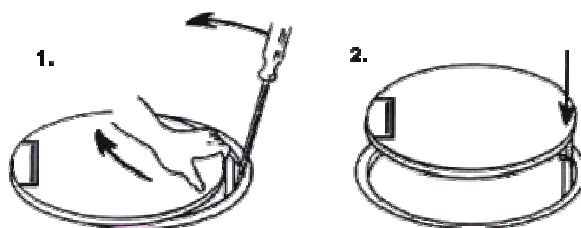
(Optional) Remove lid of floor box assembly (Figure 1) - by placing flat blade screwdriver down hinge to unfasten from retaining clip. Floor contractor is then to cut and fit the floor finish into the lid rebate or the optional matching cast rebate infill is to be affixed.

Fit the model 595 frame into the mounting space created in Step A..) by slackening fixing claws - then easing the unit into place. Secure the frame by tightening claws until solid – **do not overtighten**.

Terminate outlets as required (as per AS3000) – within apparatus boxes supplied. Internal segregations may be cut away for loop-wiring, if required. Apparatus boxes then snap into place within the floor box frame (on left & right of hinge).

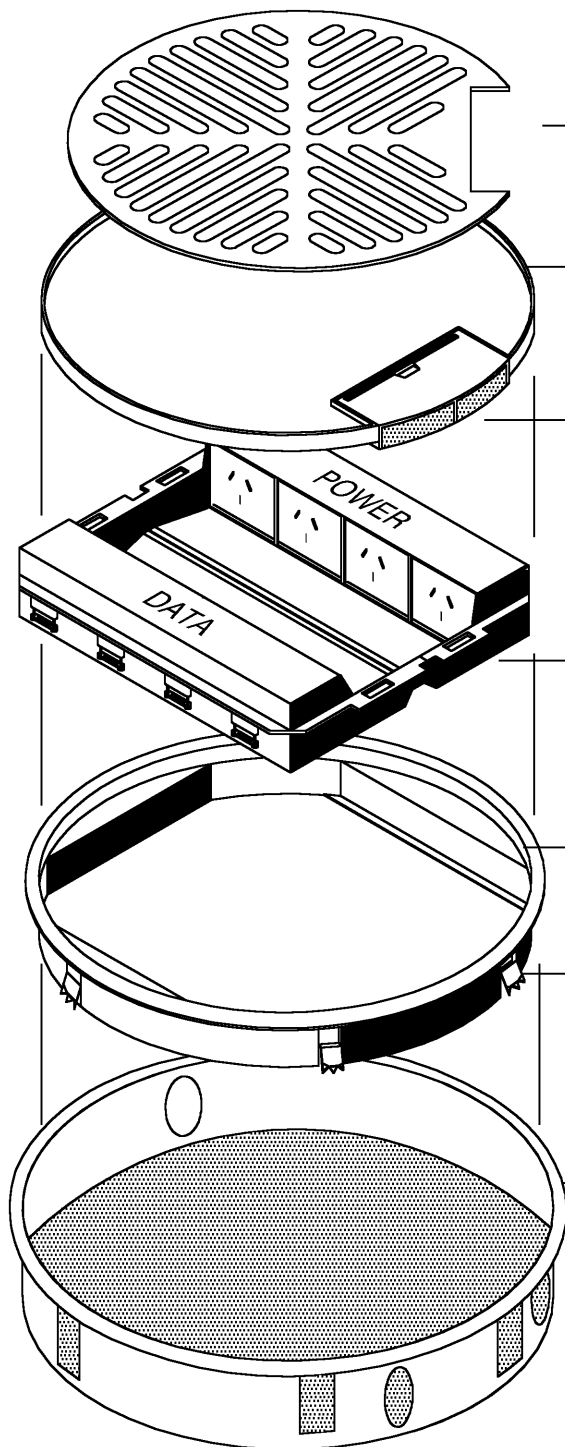
Replace floor box lid (Figure 2) and make a note not to overtighten hinge screws.

Test the operation of the unit. Ensure lid & frame are free from debris (adhesive etc.) to allow lid to open and close easily.



590CS0	-	5-15mm Clamp Set
590CS1	-	15-35mm Clamp Set
590CS2	-	35-50mm Clamp Set
590D	-	Satin Lid Rebate Infill

Assembly Diagram Cat No. FFOB-595



Features:

Optional cast alloy lid infill with slip resistant tread. Available in satin silver finish to match lid and frame set.

Cast alloy lid assembly with 5mm carpet rebate. (Hinges to frame assembly).

Cast alloy cable outlet flap with neoprene dust guards and integrated recessed metal handle.

Maximum outlet capacity
- 4 No. Auto switched single GPO's
- 4 No. voice / data outlets

Cast alloy frame assembly with 10mm carpet protective side flanges.
(325mm Dia.)

Fixing clamps securing lid / frame to box body

Steel canister
(308mm Dia. x 65mm deep)
4 No. 25mm Dia. conduit knockouts
Box body can be cast directly into concrete or a preformed recess.

Recess Size:
Nom. 320 Dia. x 85mm deep